

Challenges and Opportunities for Learning Analytics when formal teaching meets social spaces

Nazim Rahman & Jon Dron
TEKRI
Athabasca University





Welcome to Vancouver!

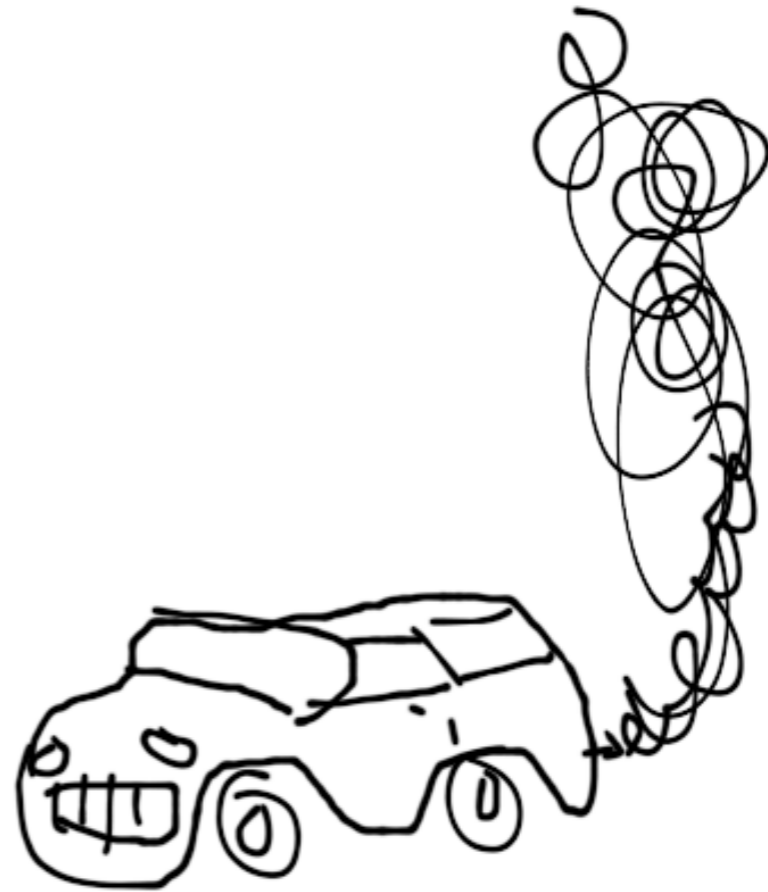
Technologies

Orchestration of
phenomena to
same use

(w. Brian Arthur)

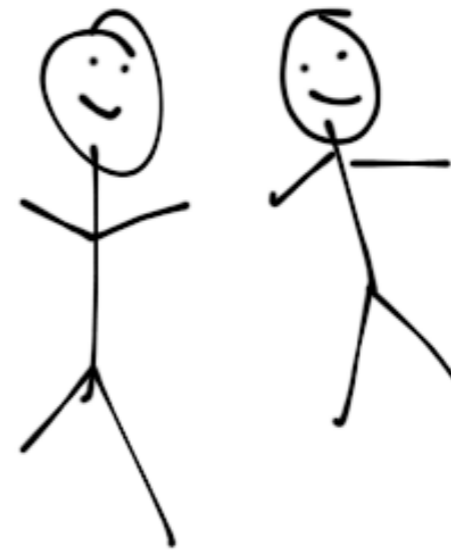
HIARD technologies

Orchestration
embedded



SOFT technologies

Orchestration by
people



HARD

Efficiency
Freedom from
Error

Speed

We need Baby Bear's bed-

NOT TOO HARD; NOT TOO SOFT;

JUST RIGHT

SOFT

Flexibility
Creativity
Adaptation



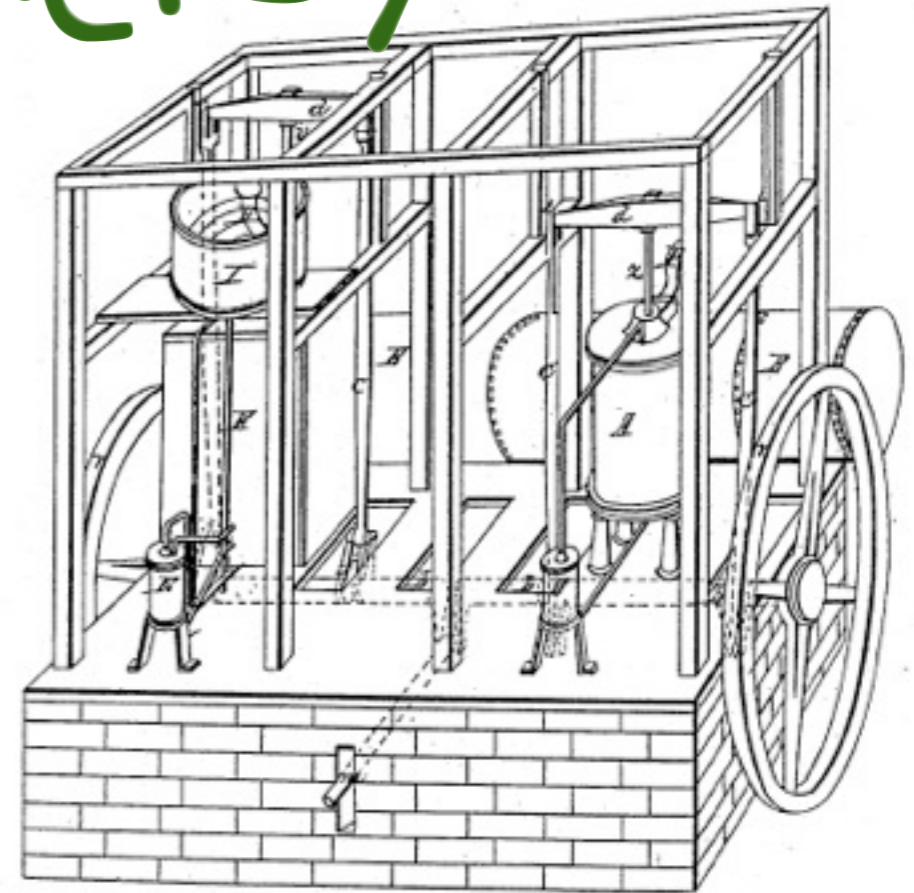
Not about machines vs processes

e.g. legal systems may
be very hard
email is very soft



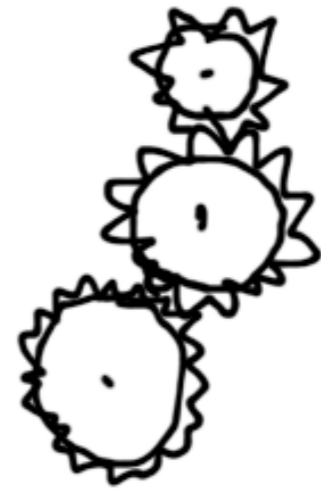
SOFT technologies
may be used **SKILLFULLY**

HARD technologies may
be used **CORRECTLY**

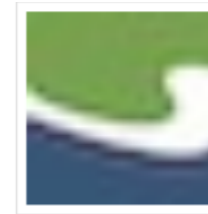


All technologies
are **assemblages**

Adaptation
occurs by
assembly.



ATHABASCA LANDING



CREATION, SHARING, CONNECTION, COMMUNICATION

A learning commons,
filling gaps left between
hard systems



Description:
This is a space to support Jon Dron's contribution to the #change11 MOOC (Massive Open Online Course).
Brief description: Jon Dron's contribution to #change11 .
Tags: change11, #change11, mooc
Website: <http://change.mooc.ca/week11.htm>

Where to look first Things to think about

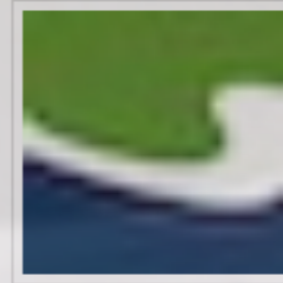
Overview of the main ideas
Elephants in the room
Why do we go about researching the things that have nothing to do with technology - the passion, artistry, imagination and caring of a teacher, for example?

Suggested activities
The conilocks effect
The easiest and most efficient way of making technologies softer or harder is to assemble hard pieces, adding to make things softer or replacing to make them harder. But what's the best way to do that? What kind of glue is needed? Is an aggregator like [qrssHopper](#) the answer? Or mashup

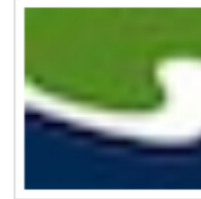


- Soft things, hard things and invisible elephants
- Jon Dron's contribution to #change11
- Manage group operators
- Edit Group Layout
- Edit group
- Invite someone
- Group bookmarks
- Soft things, hard things and invisible elephants Poll
- Group pages
- Group blog
- Group files
- Group file folders
- Group bookmark folders
- Group members

A very soft
system
assembled from
hard pieces



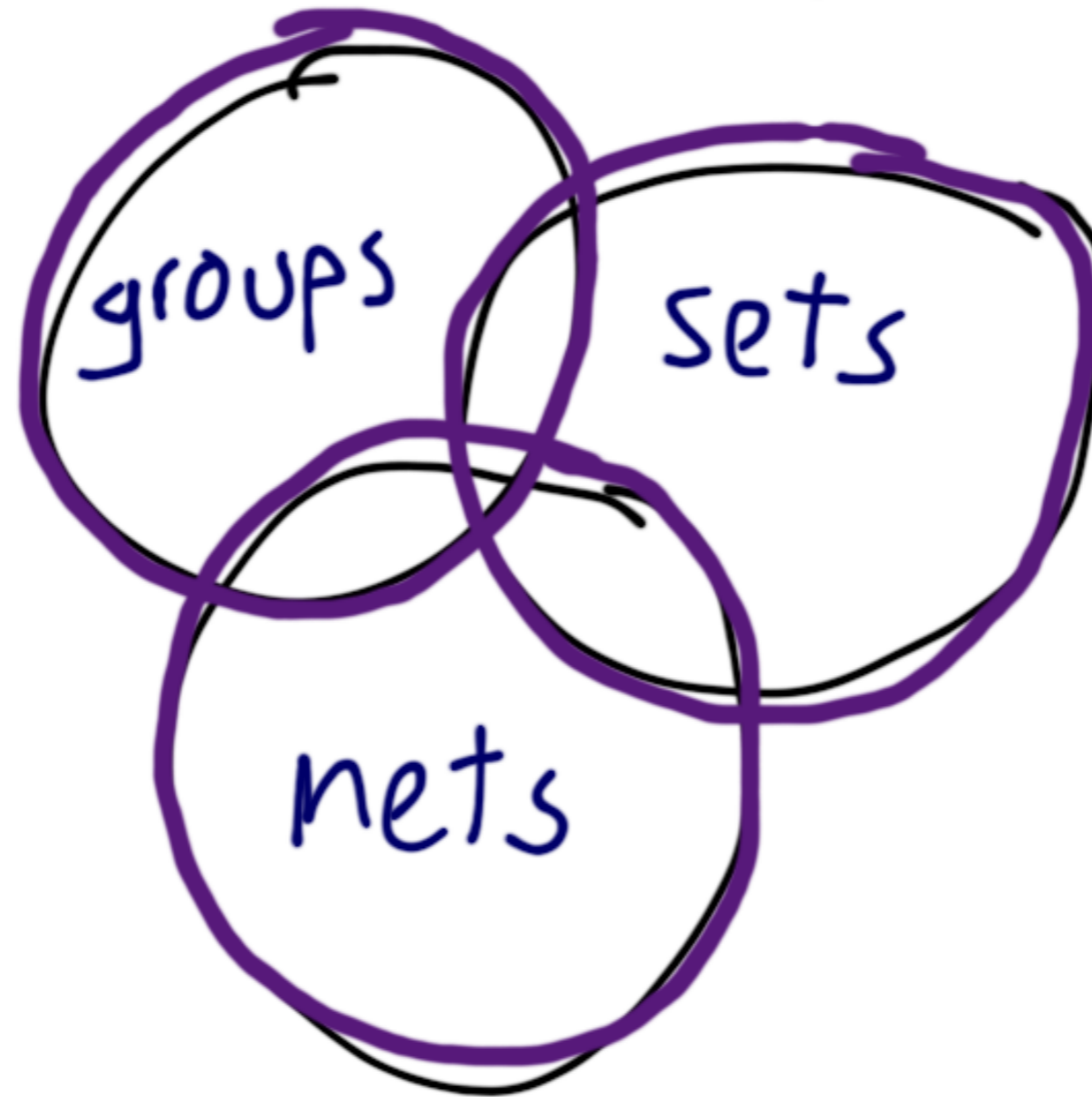
Multiple uses



Formal Learning
Search ad hoc Permanent
Informal Teaching
Admin transient



MULTIPLE SOCIAL FORMS



Many ways to learn.

Lack of defined
course spaces & forms.

Many other uses

COURSES...

Within groups,

Using sets (tags)

Using nets (following)

Many variants,
very hard to
identify



The problem

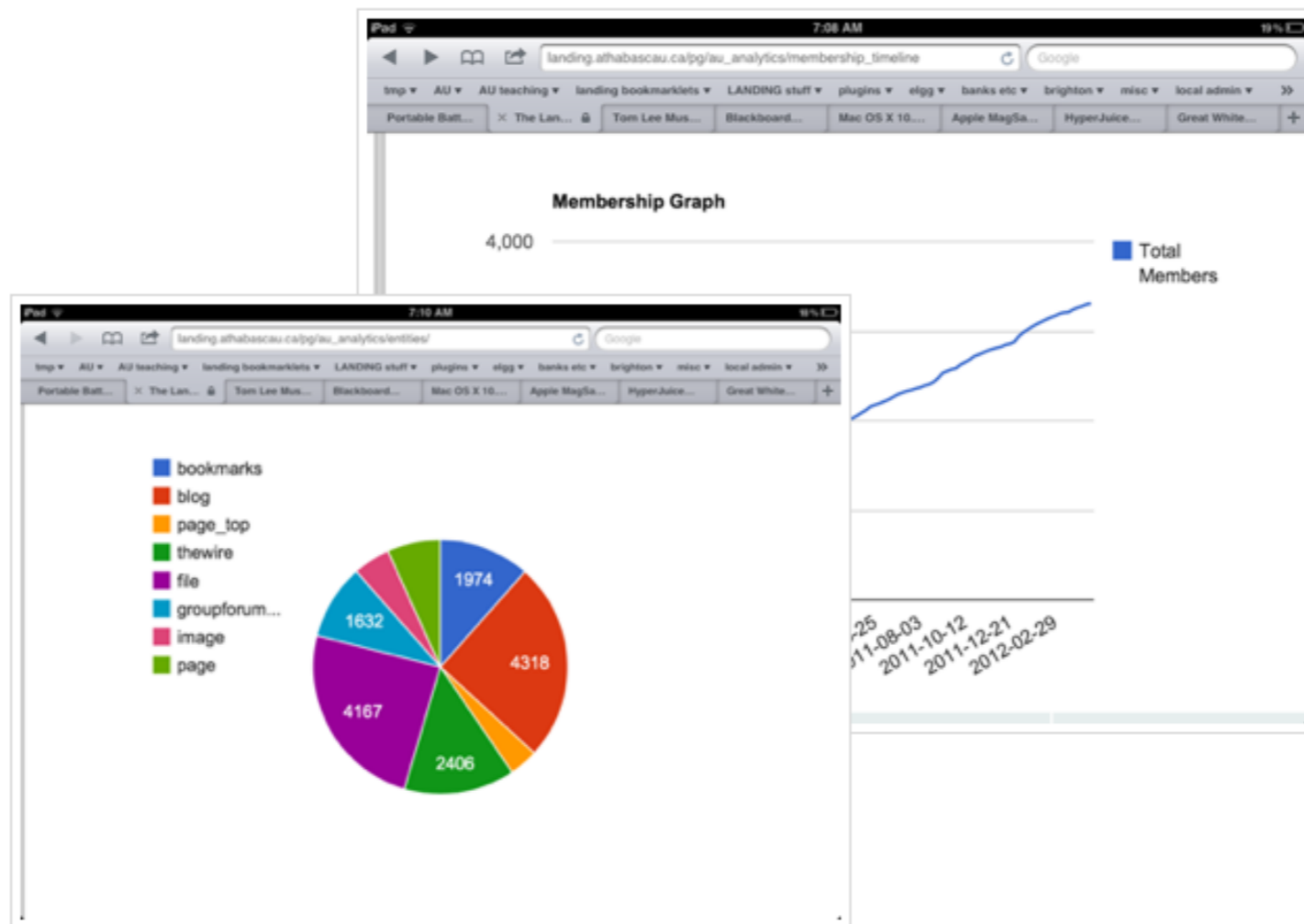
What's going on?

Is it working?



LASSIE

Learning Analytics for
Social Software in Education



LASSIE - Learning Analytics for Social Spaces in Institutional Education

Log out History

Analytics Wizard

Select Data

Click [here](#) to select data. You will have the option to define users, course, entity, and group. Alternately queries would be executed globally. You can also choose timeslices.

Graph Data

Once you have selected and run a query, tabular results will be displayed and you will be presented with option to graph the data. Click [here](#) to graph data from a previously run query.

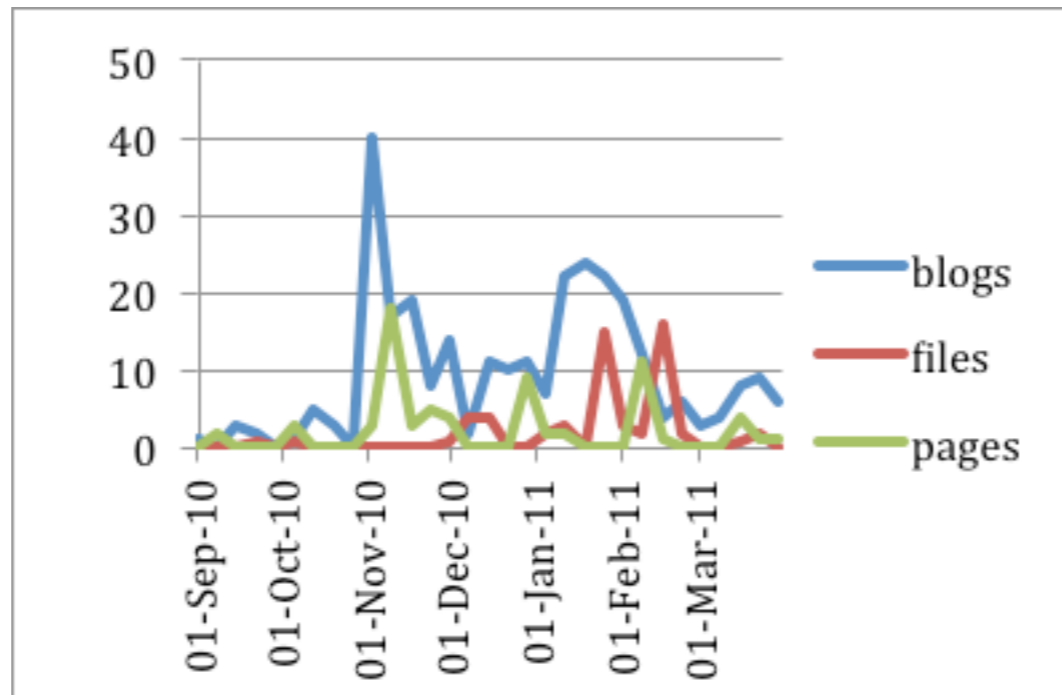
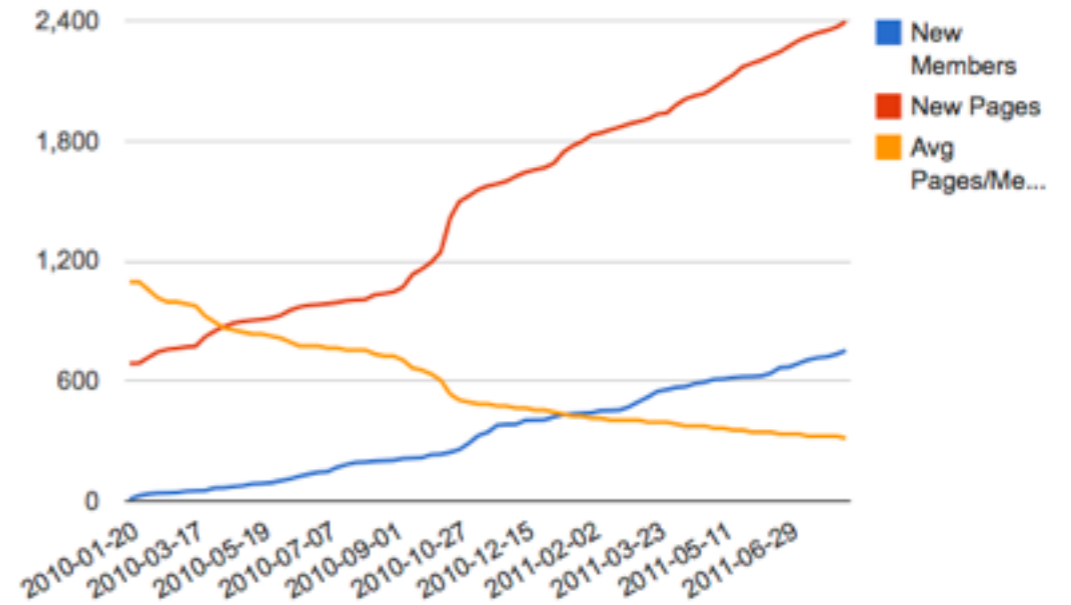
Correlate Data

Click [here](#) to select data set to correlate.

Data Storage and export

Click [here](#) to set your data selection and export options.

Page Creation to Membership Comparison



LASSIE

Two versions -

- 1) stand alone
- 2) Elgg plugin (cut-down)

LASSIE

Filtering -

group

net (relationships)

set (tags)

The biggest problem -

asking the
right
questions



Some findings

Tool preferences

Group preferences

Hub removal

Matthew Principal

Soft things to harden

Individual activities

Aggregated paths

Group activities

Set activities

Net growth

AND
MUCH
MORE



Thank you 
jond@athabascau.ca
landing.athabascau.ca