

# The Irish Fieldschool of Prehistoric Archaeology

## About our fieldschool

Welcome to The Irish Fieldschool of Prehistoric Archaeology (IFPA), where first-class education and cutting-edge research go hand in hand. Our fieldschool is fully accredited and transferable academic credits are available for international students.

We are located on the Burren in Co. Clare, a world renowned landscape, including the Cliffs of Moher, recently recognised by UNESCO as a Global Geopark for its international geological and archaeological significance.

During the 2017 summer season, we will be excavating a prehistoric wedge tombs, built over 4000 years ago by a Chalcolithic/Early Bronze Age society. The tombs are situated on Roughan Hill among the densest concentration of such tombs in Ireland. This will be the third wedge tomb for us to excavate in this significant cluster. We are primarily after human bone to analyse patterns of interaction, through ancient DNA, isotope and osteological analysis, but are also trying to understand the past belief systems of this ancient culture through the structural patterning left by their ritual activities. Check our website [www.prehistoricfieldschool.com](http://www.prehistoricfieldschool.com) for further details.



# The Irish Fieldschool of Prehistoric Archaeology

## The 2017 summer programme

**Programme Details:** Combinations of the following are also offered

### Session 1: May 15th - May 26th

Course title: Irish prehistory and the tombs of the ancestors (**2 weeks**)

### Session 2: May 29th - June 23rd

6 Semester Credits/12 ECTS Credits

Course title: Archaeological excavation and recording techniques (**4 weeks**)

### Session 3: June 26th - July 1st

TBC Semester Credits/TBC ECTS Credits

Course title: Experimental archaeology and the material culture of the Irish Early Bronze Age (**1 week**)

### Session 4: July 10th - Aug 4th

6 Semester Credits/12 ECTS Credits

Course title: Archaeological excavation and recording techniques (**4 weeks**)

### Session 5: Aug 7th - 18th

3 Semester Credits/6 ECTS Credits

Course title: Irish prehistory and the tombs of the ancestors (**2 weeks**)





# Archaeological excavation and recording techniques



## 4 weeks



This is a 4 week excavation course during which students take part in the excavation of a prehistoric tomb in the west of Ireland.

The excavation is on Roughan Hill, in the Burren, the site of the densest distribution of wedge tombs in Ireland and is part of a major collaborative project with specialists in several Irish and British Universities.



### Course details

This course will be run twice during 2017.

**Session 2:** May 29th - June 23rd

**Session 4:** July 10th - Aug 4th

Academic Credit: 6 Semester Credits/12 ECTS Credits

Cost: €3,250

Cost includes all travel (after arrival at the course), accommodation and tuition. Students are expected to cook for themselves. Full kitchens with all appliances are available at the student accommodation.

THE IRISH FIELDSCHOOL  
OF PREHISTORIC  
ARCHAEOLOGY

### 2017 Tutorials will include

Excavation and recording: Dr Ros Ó Maoldúin

Osteoarchaeology: Dr Linda Lynch

Archaeozoology: Dr Fiona Beglane

GIS: Dr Richard Clutterbuck

3D modelling (Agisoft): Dr Ros Ó Maoldúin

Total station and level survey: Dr Ros Ó Maoldúin

Additional lectures are given by visiting academics every Tuesday evening (watch our facebook page for details).

### Course and accommodation location

Students will be based in Lisdoonvarna, Co. Clare on the edge of the Burren. The Burren is a karstic limestone landscape of major international archaeological and geological significance, recently recognised by UNESCO as a Global Geopark.

Book now @

[www.prehistoricfieldschool.com](http://www.prehistoricfieldschool.com)



NUI Galway  
OÉ Gaillimh



# Irish prehistory and the tombs of the ancestors

## 2 weeks



This is an intensive two week site-survey and study-tour course during which students learn about the different Irish megalithic tomb traditions, other prehistoric burials and how to conduct an archaeological survey, with traditional and high-tech modern techniques.



### Course details

This course will be run twice during the summer of 2017.

**Session 1:** May 15th - 26th

**Session 5:** Aug 7th - 18th

Academic Credit :3 Semester Credits/6 ECTS Credits

Cost: €1,650

Cost includes all travel (after arrival at the course), accommodation and tuition. Students are expected to cook for themselves. Full kitchens with all appliances are available at the student accommodation.

### Tour Highlights include

A tour of the prehistoric sites on the Burren, Co. Clare.

A tour of the Bru na Boinne world heritage sites, Newgrange, Knowth and Dowth.

A trip to the Aran Islands and a tour of Dun Aonghasa Cliff edge fort.

### Learn

- Hand planning
- Note taking
- Digital photography
- Photogrammetry
- Dumpy level survey
- Total-station survey
- Geophysical survey
- GIS
- 3D modelling (Agisoft)

### Course and accommodation location

Students will be based in Lisdoonvarna, Co. Clare on the edge of the Burren. The Burren is a karstic limestone landscape of major international archaeological and geological significance, recently recognised by UNESCO as a Global Geopark.

Book now @

[www.prehistoricfieldschool.com](http://www.prehistoricfieldschool.com)

# Experimental archaeology and the material culture of the Irish Early Bronze Age 1 week (6 days)



## Course details

This course will be run once during the summer of 2017.

**Session 3:** June 26th - July 1st

Cost: €850

Cost includes all travel (after arrival at the course), accommodation and tuition. Students are expected to cook for themselves. Full kitchens with all appliances are available at the student accommodation.

THE IRISH FIELDSCHOOL  
OF PREHISTORIC  
ARCHAEOLOGY

This is an intensive 1 week experimental course. During the 2017 course we will concentrate on making Early Bronze Age and Chalcolithic Bronze objects. All materials will be provided and students will be allowed to take a selection of what they make away with them.

The course will be run in Craggaunowen, Co. Clare, Ireland's oldest and foremost reconstruction park.

Tutorials will be held in the castle (yes a real castle!) and practical work will be carried out in a reconstructed fort and crannog.

The course will be run by the fieldschool director, Dr Ros Ó Maoldúin, and Dr Billy Mac Floinn. Billy is one of Ireland's most experienced experimental Bronze casting archaeologists, and this is an unparalleled opportunity to learn from the best!



## Course and accommodation location

Students will be based in Lisdoonvarna, Co. Clare on the edge of the Burren. The Burren is a karstic limestone landscape of major international archaeological and geological significance, recently recognised by UNESCO as a Global Geopark.

Book now @

[www.prehistoricfieldschool.com](http://www.prehistoricfieldschool.com)

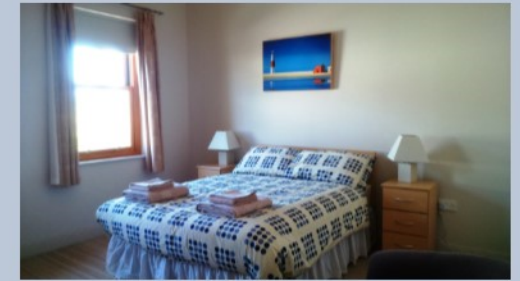


# The Irish Fieldschool of Prehistoric Archaeology

## Fieldschool accommodation and facilities



In 2017 our students will be housed in the centre of Lisdoonvarna village, in the town square holiday homes ([www.townsquare.ie](http://www.townsquare.ie)). These are comfortable modern town townhouses, with all appliances, including broadband internet. Students will be housed 2 to a room, in twin beds. The accommodation is self-catered and students are expected to cook for themselves. There will be no more than 6 students to a house/kitchen and there are various options for eating out in the village.



Our indoor classes, workshops and post-excavation work (on wet days) will be carried out in our University research station which is equipped with PC's, laboratory equipment and a lecture theatre.



Lisdoonvarna is well served by public transport (bus) and there is plenty to do in the area on the weekends (e.g. surfing, caving, kayaking, hiking and site-seeing).

