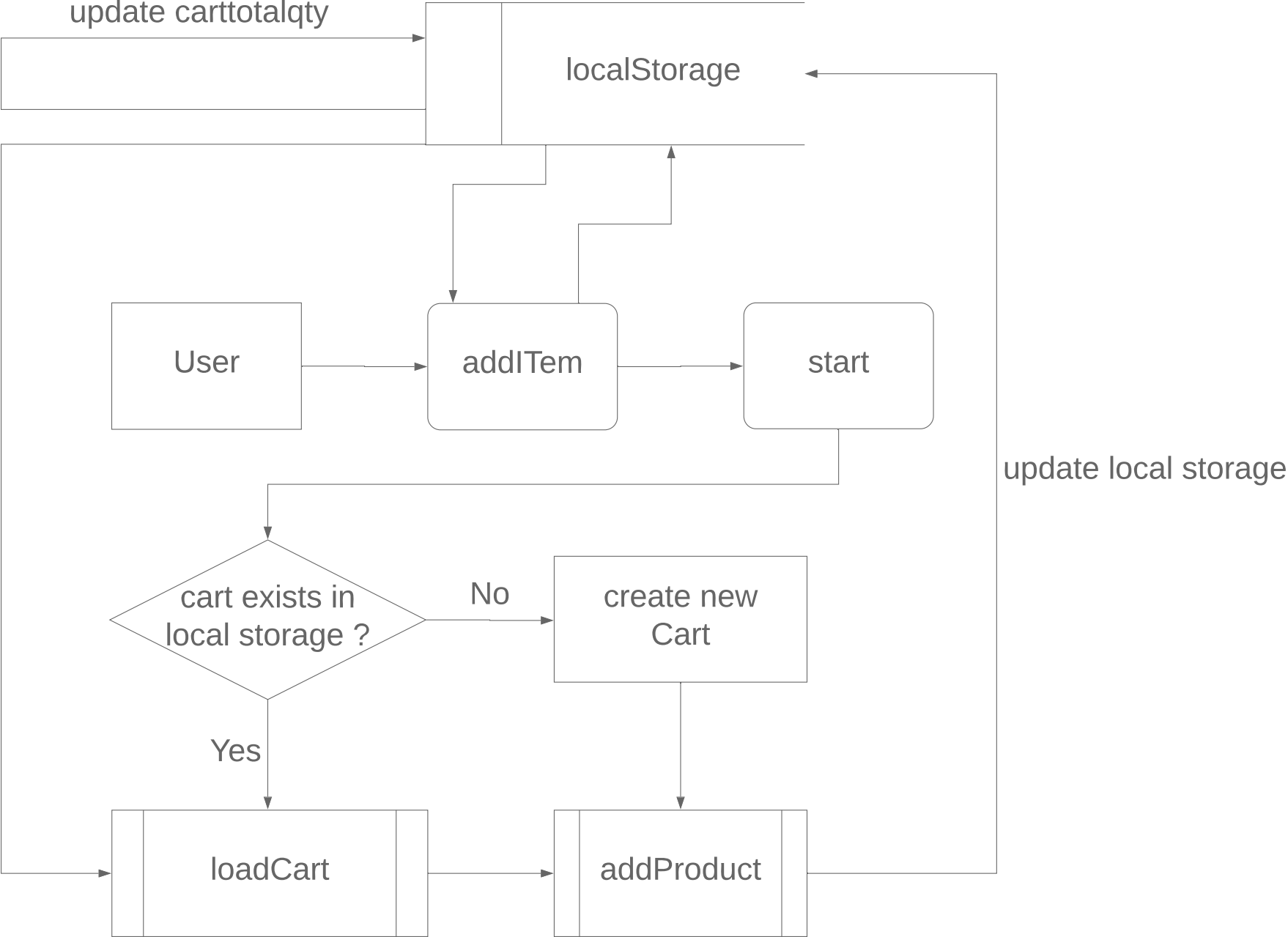


addItem flow diagram

zakaria bakkal | April 17, 2019



Description

A data flow diagram (DFD) maps out the flow of information for any process or system. Use a DFD to analyze an existing system or model a new one.

This particular DFD is a logical DFD, which focuses on the business and the information needed, not on how the system works or is proposed to work (which is what a physical DFD does). For example, in a logical DFD, the processes would be business activities.

DFDs use defined symbols and shapes to show data inputs, outputs, storage points, and the routes between each destination. This diagram uses the Gane and Sarson symbols. These symbols, as well as Yourdon and Coad symbols, can be found in the Data Flow shape library.

Tutorials

(Hold Shift + ⌘ or Ctrl, then click)

- Learn more about logical vs. physical DFDs
- Learn more about DFD symbols
- Watch Lucidchart basic tutorials

This is a use case where a user is adding a product by clicking on the addItem button on Arganoil.html, Exfoliatingsoap.html or Lavaclay.html.

addItem could be: addArganOil. addBlackSoap, addLavaClay