

Open Education: New Developments, Needs, and Opportunities for Research

June Ahn
Assistant Professor

University of Maryland,
College Park

College of Information Studies
College of Education



Agenda

- Introduce Myself
- Open Education: Why Now?
- The Case of Peer 2 Peer University (P2PU)
- Fruitful Directions



Assistant Professor

<http://ahnjune.com/>

Design

Implement

Study

CASCI: Center for the Advanced Study of Communities and Information



OCEL Group
Open Communities for Education and Learning
<http://casci.umd.edu/impact-domains/ocel/>



Photo Credit: <http://www.flickr.com/photos/opensourceway/6555466069/sizes/o/in/photolist-aZhtF4-eB6NMo-eB3DiF-eB6hVL-7Etwg5-a9JX2W-9Liu5Q-agxgYm-8CFPTG-8UxP7J-9rj19D-7YPYKZ-97aqlu-dYaRrD-eB3T1p-eB3KBa-eB3B6n-eB3Rh2-e2z8Gf-ctak75-ctahR3-ctahHJ-ctaiFd-ctagJJ-ctamJE-ctajEy-ctahxS-ctahlw-ctaiVC-ctakmo-ctajsS-ctamPU-ctagT3-ctaiqq-ctah9o-ctai6N-ctahjh-ctajSy-8xWaLZ-8xZcEA-8xZcHG-8xZjaW-a91Djq-cJpkMy-cJpque-ctajbj-cJphwY-cJpjCA-cJpmbj-cJpqMh-cJpvXW/>

coursera

edX

U
UDACITY



P2PU

StackExchange

A new way to capture,
organize and share information

What's Changed?

- Access
- Bandwidth
- Tools
- Production

What's the Same?

- It's still online **learning**
- Limited by our own imagination

Put another way...

Conditions are Changing



Learning Remains





Peer to Peer University
p2pu.org

What is P2PU?



A University for the Web. Built by an open community.

LEARNING BY EVERYONE. FOR EVERYONE. ABOUT ALMOST ANYTHING. COMPLETELY FREE.



Blog »

Get the latest news and updates from P2PU. New projects. Big ideas.



Community »

The core of P2PU is an open community. We are building a new university together. Join us!



MOOCs »

Our MOOCs are big learning communities that run on the web. Lots of people sign up, and we facilitate collaboration and team work.



Lab



Badges »



Schools »

Open Schools

[Home](#) » [School of Webcraft](#)

[Browse](#)

Learn web development at School of Webcraft.

Peer Powered

Learning is more fun with friends. Work alongside your peers, get help from mentors, or offer your expertise to those in need. Peer-driven study groups and challenges by learners *just like you* are available *right now*. Anyone can [become a mentor](#) to provide one-on-one help.

Backed by Mozilla

Mozilla's mission is to keep the web open, and to enable anyone to take part in building it's future. In School of Webcraft you can earn [badges](#) backed by Mozilla, that highlight your technical and community skills to your friends, colleagues and potential employers. School of Webcraft Badges are easy to display on your personal website, online profiles, and CV and use the [Open Badges framework](#), a way to record, track, and display your skills and knowledge across the web.

Free of Charge

Typical developer certification is expensive, out of touch, and out of reach. You can participate in the School of Webcraft for free.



Open Badges



Helpful Feedback Badge

You provided helpful and interesting feedback to a peer while maintaining a respectful tone. You don't hate, you motivate!

Requirements:

You need at least 1 peer to say that you provide helpful and interesting feedback while maintaining a respectful tone.

Other badges you can apply for:



Super Blogger



Creative
Presentation



HTML Basic



DNS Basic



Hosting



Open Community



Open Experimentation

🏠 [FAQ](#) [Blog](#) [About](#)

P2PU

Fork me on GitHub



The Mechanical MOOC Presents... A Gentle Introduction to Python

📅 Next Class begins Spring 2014

but you can sign up now.

Join

📁 Free & Open

⚡ Learning

Our Project with P2PU

- Data Sharing + Data Science
- Learning Groups in the Mechanical MOOC
- How do Open Learning Communities Function?

How should organizers design courses?

Ahn, J., Weng, C., & Butler, B. S. (2013). The dynamics of open, peer-to-peer learning: What factors influence participation in the P2P University? Proceedings of the 46th Annual Hawaii International Conference on System Sciences



- Seven teacher professional development courses
- ~2-3 organizers
- 20-30 participants
- 20-40 followers
- 600-1000 unidentified visitors
- 7 courses x 13 weeks
(n = 91)

How should organizers design courses?

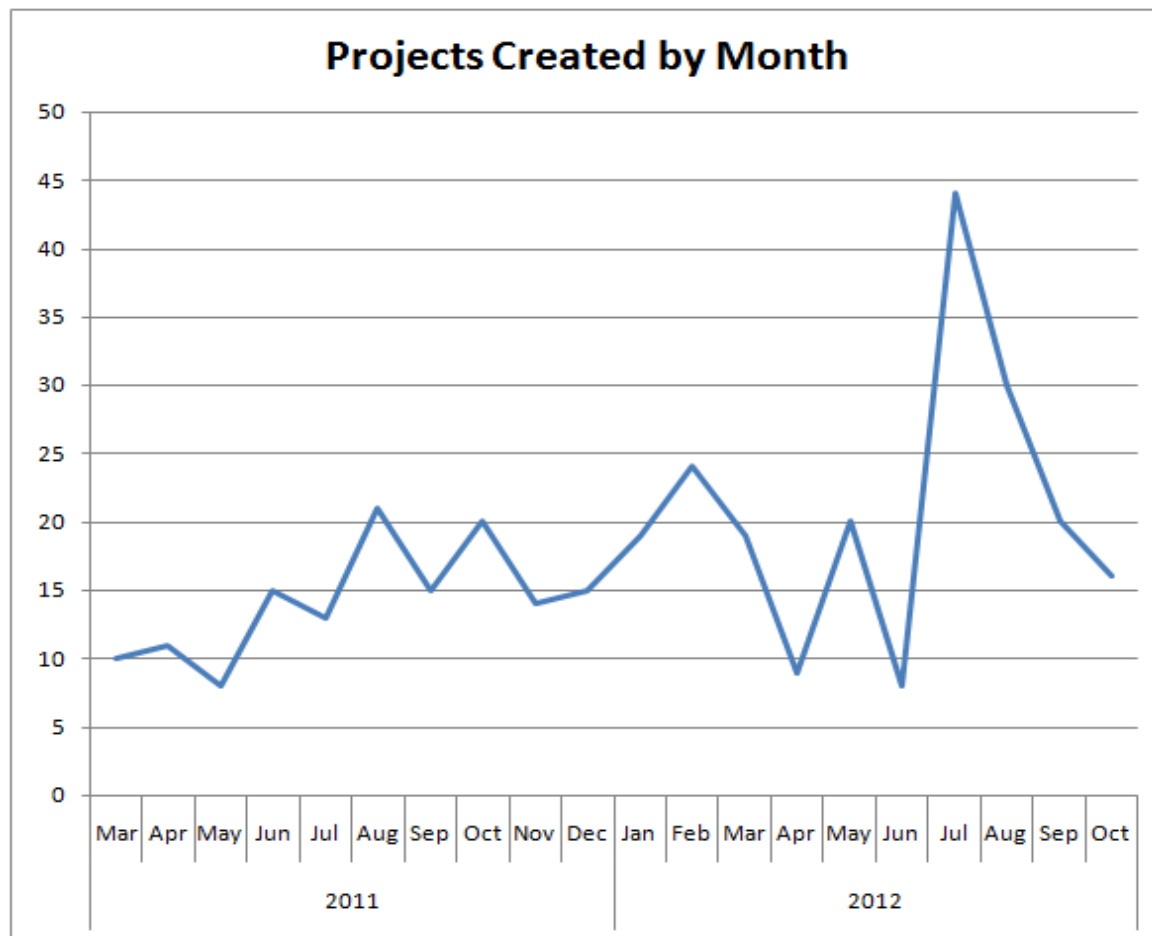
Ahn, J., Weng, C., & Butler, B. S. (2013). The dynamics of open, peer-to-peer learning: What factors influence participation in the P2P University? Proceedings of the 46th Annual Hawaii International Conference on System Sciences



- Organizer Activity -> Important for Returning Members
- Clear prompts -> Important for New Members

What does P2PU Look Like?

Ahn, J., Butler, B. S., Alam, A., & Webster, S. A. (2013). Learner participation and engagement in open online courses: Insights from the Peer 2 Peer University. MERLOT Journal of Online Learning and Teaching, 9(2), 160-171.

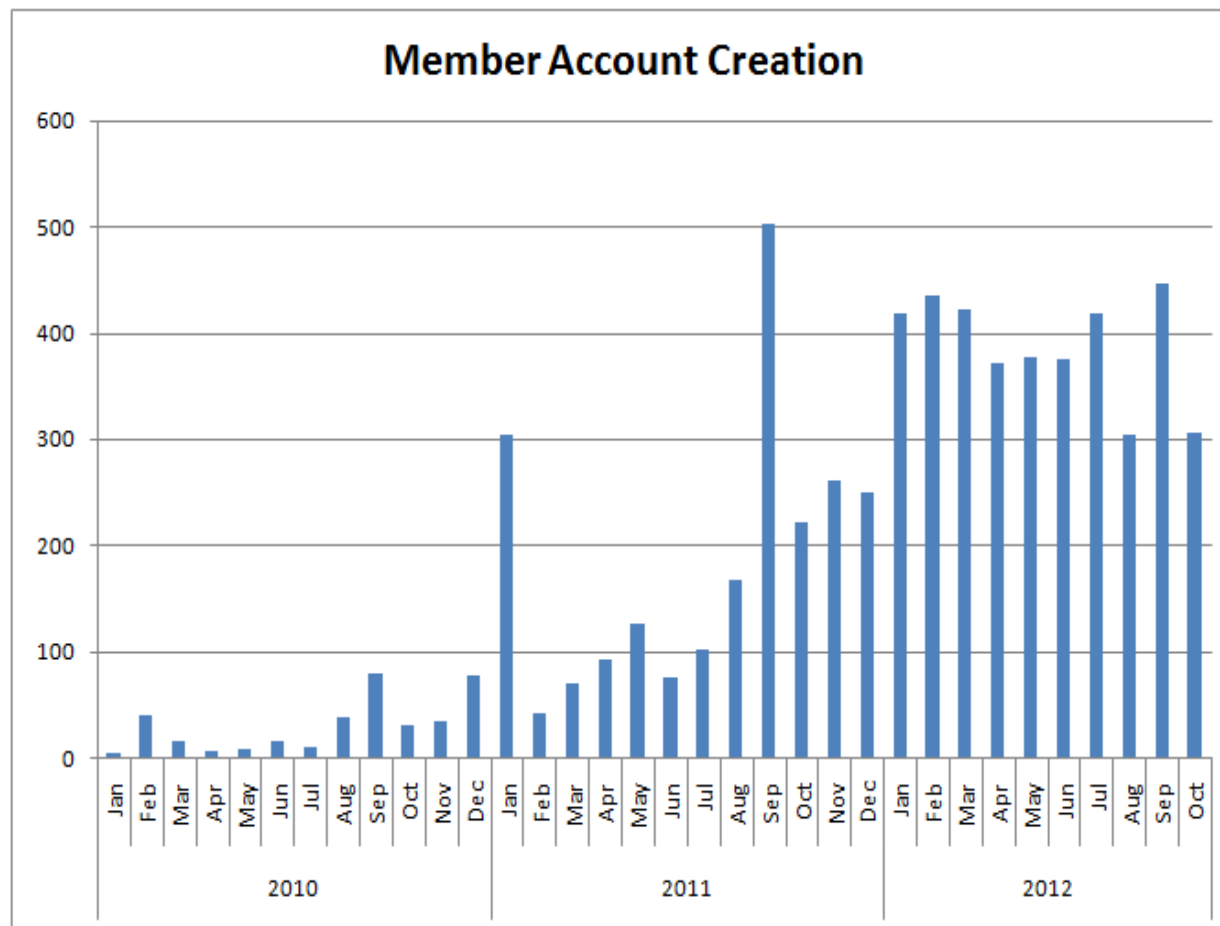


Over 2,000 Projects Started

368 (~18%) went “live”

What does P2PU Look Like?

Ahn, J., Butler, B. S., Alam, A., & Webster, S. A. (2013). Learner participation and engagement in open online courses: Insights from the Peer 2 Peer University. MERLOT Journal of Online Learning and Teaching, 9(2), 160-171.



Over 41,000 Registered Learners

6,483 (~16%) returned at least once

Current Work

- Ecological Perspective
- Production
 - How to create supply of open learning courses?
 - How to support the organizers?
 - How to design for engagement?

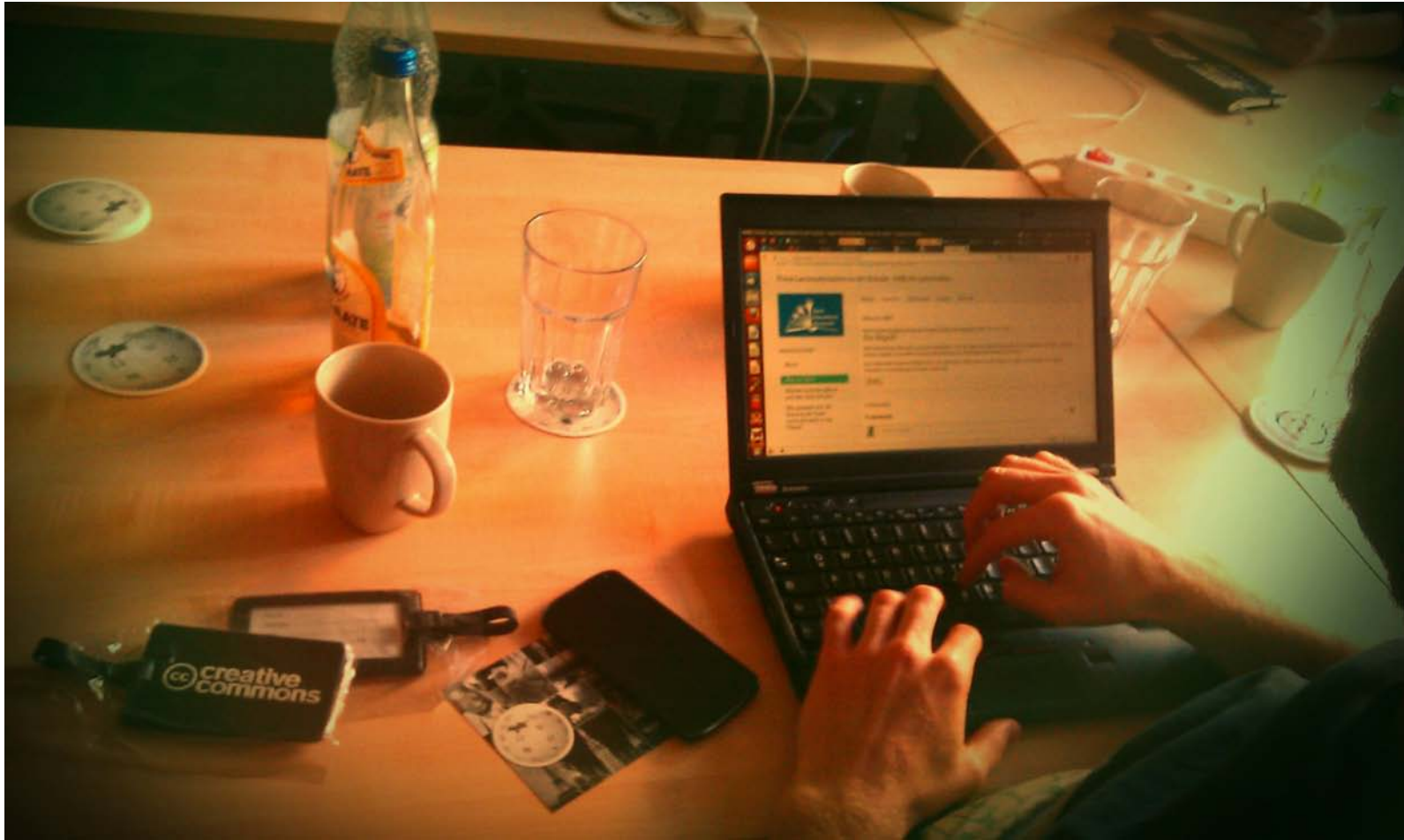
Recreating Education Systems?



Or New Design Patterns?



Back to the Learner



OER is Not Enough

- Who is the learner?
- Where do they come from?
- What do they bring to an experience?
- How do they engage? Collaborate?
- What do they gain?
- How do pathways develop?
- Who are we neglecting?

Thank You

June Ahn

@ahnjune

<http://ahnjune.com/>